



KARAN<sup>™</sup>  
KOTHARI

JEWELLERS

*Pure & Timeless*



# *The Polki Collection*

*Timeless polki, crafted in its purest form.*



## *Emerald Polki Drops*

Structured forms set with uncut polki diamonds, accented by vivid emerald drops crafted with precision and quiet distinction.

## *Heritage Emerald Polki*

Uncut diamonds framed with deep emerald tones, brought together in designs that reflect classic craftsmanship and enduring character.





## *Polki Studs*

Pure uncut diamonds, designed with quiet strength and lasting charm.





## *The Polki Mandala*

Uncut diamonds layered with emerald detailing, crafted to stand out through intricate design and refined structure.



## *The Polki Maharani Necklace*

A bold ruby centre framed by intricate polki layers, accented with emerald drops in a design rooted in royal tradition.



## *Polki in Layers*

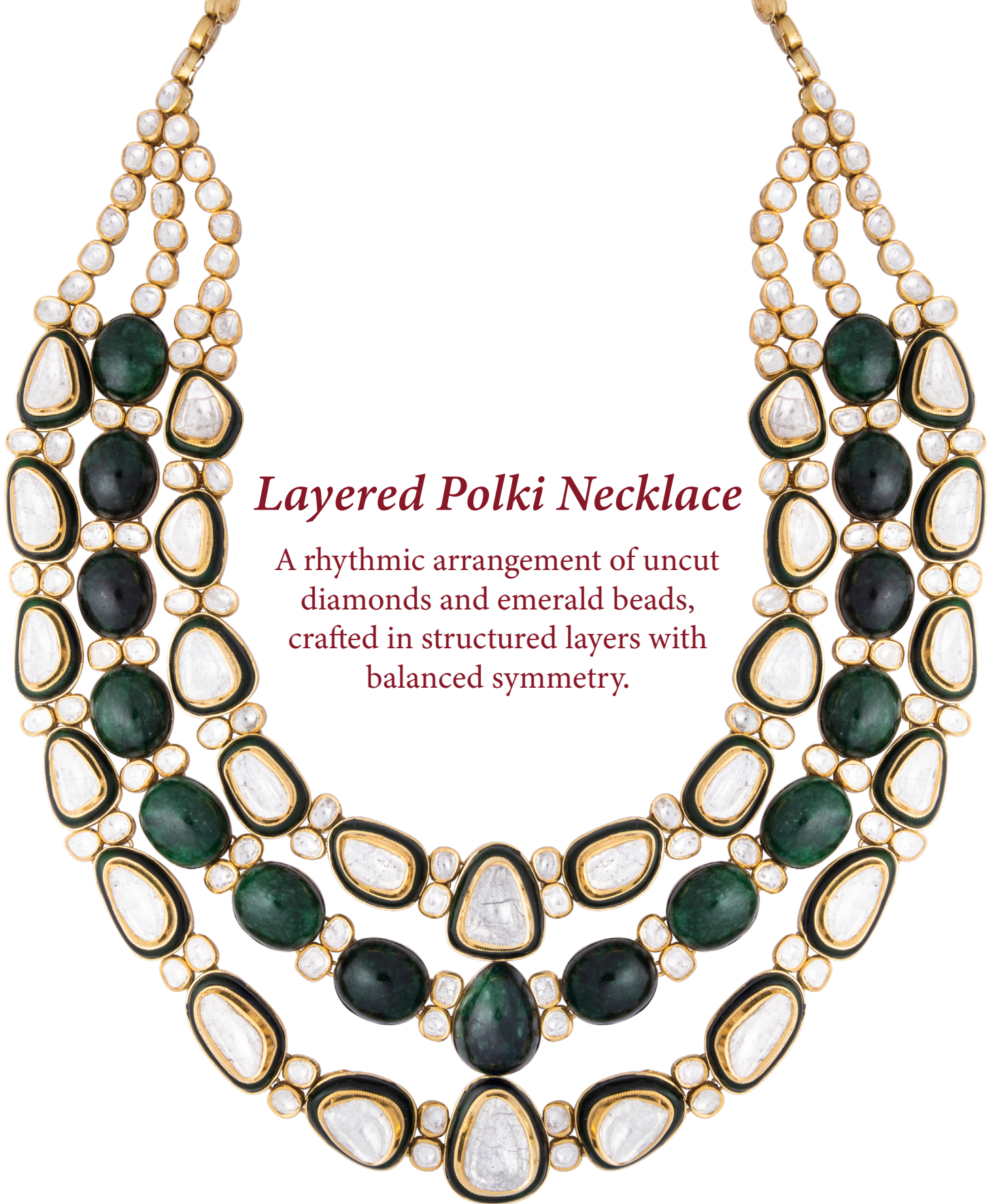
Uncut polki diamonds set in intricate forms, paired with soft emerald bead strands.



Finished with delicate pearl drops, adding fluidity  
and refined movement.



*Floral Polki Pendant*



## *Layered Polki Necklace*

A rhythmic arrangement of uncut diamonds and emerald beads, crafted in structured layers with balanced symmetry.



## *The Polki Grandeur*

A richly layered arrangement of uncut diamonds with emerald accents, completed with cascading pearl drops.



KARAN<sup>TM</sup>  
KOTHARI

J E W E L L E R S

*Pure & Timeless*

*Find Your Perfect Piece*

*Explore our collection in-store*

Nagpur | Chandrapur | Yavatmal | Mumbai | Amravati

Toll Free: 1800 210 7776